

Pilot Butte Lifestyle

Recreation Facilities & Sports Fields



Ball Diamonds

- The ball diamonds are located between Butte Street and the Recreation Center (222 Diamond Place). Pilot Butte has 4 ball diamonds and 1 mini diamond.
- Diamond #2 features ball diamond lights.



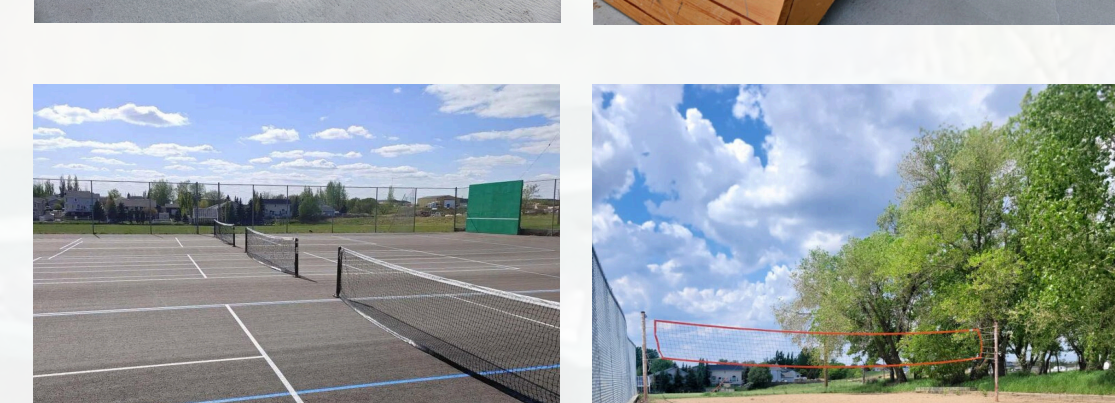
Athletic Field

- Pilot Butte's local soccer field is a central spot for community leagues, recreational play, and family fun.



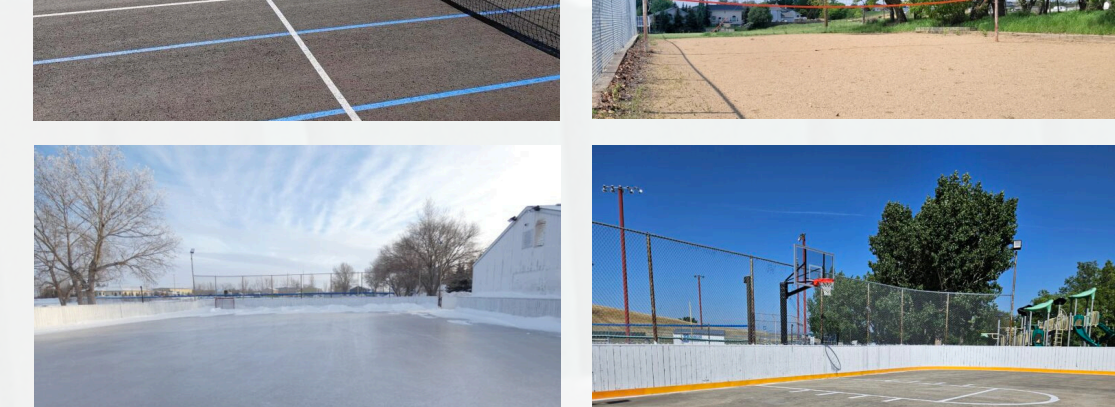
Skate Park

- Pilot Butte's skate park offers a space for skaters, bikers, and scooter riders of all skill levels to connect, practice, and enjoy an active outdoor experience.



Pickleball/Tennis Court & Volleyball Court

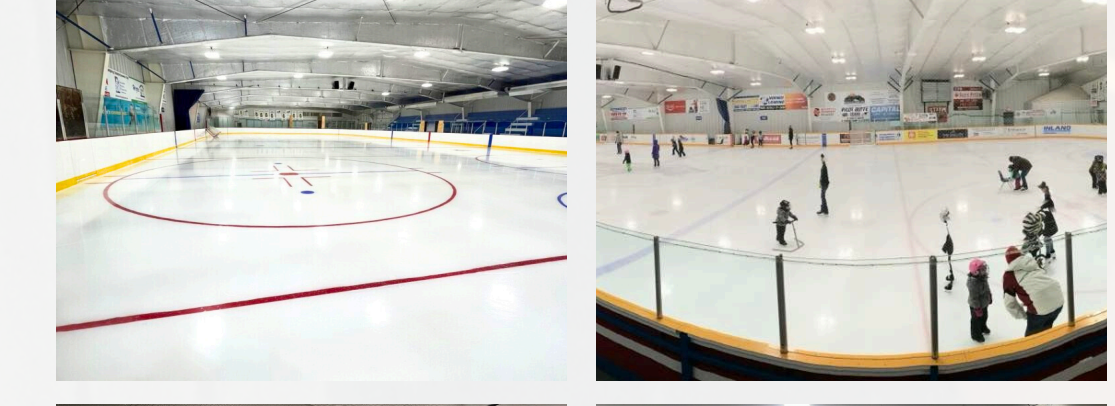
- Pilot Butte's pickleball/tennis and volleyball courts provide outdoor spaces for friendly competition, recreation, and community connection.



Outdoor Rink

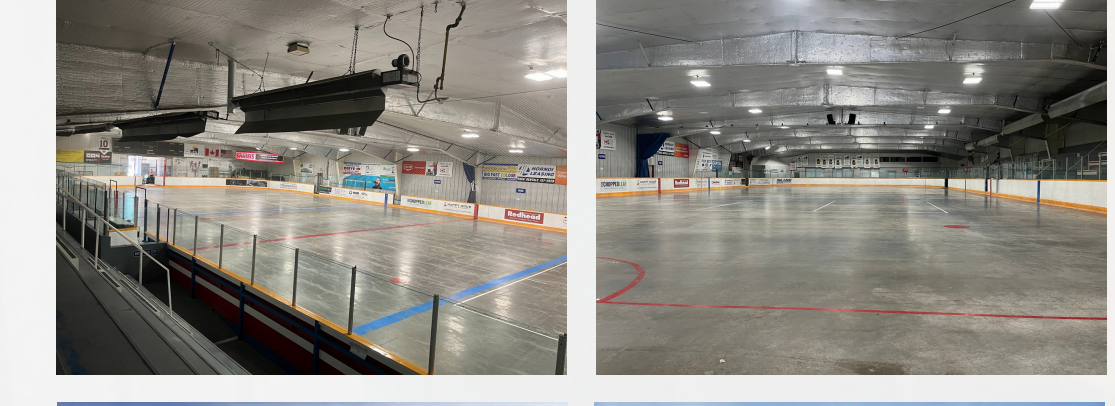
- Pilot Butte's outdoor rink is a favorite winter gathering spot where residents can skate, play hockey, and enjoy the fresh air with a warm up shack available. This area transforms into an outdoor basketball court in the summer months.

Facility Rentals & Rates



Ice Arena

- All user groups - \$230.00/HR
- Early bird rate - \$140.00/HR
- Non-prime rate - \$175.00/HR



Summer Dry Floor Arena

- Hourly: \$85.00
- Daily: \$410.00



Ball Diamonds

- Game or practice: \$55.00/Diamond
- Game or practice: \$30.00/Mini diamond
- Tournament: Local \$320.00/Day & Non-local \$530.00/Day



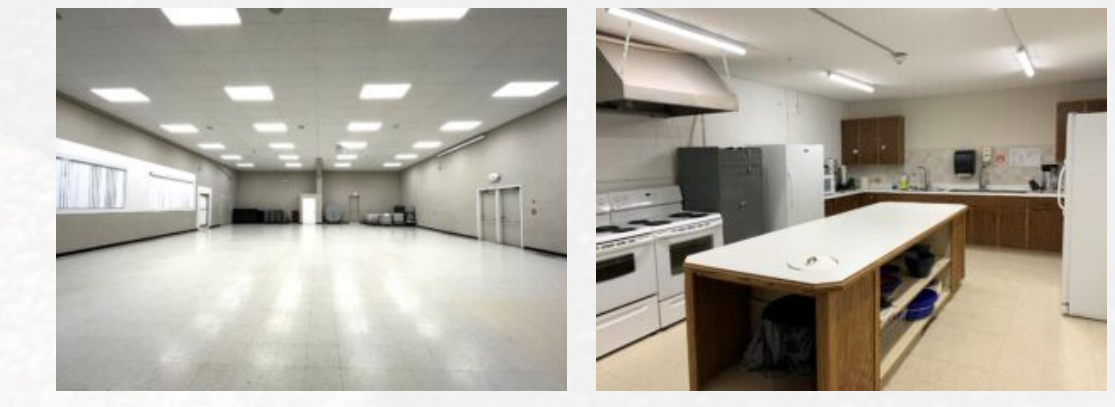
Soccer Pitch

- Local residents & organizations: No charge
- Non-local: \$22.00/HR



Golden Sunset Club

- A welcoming community space for local seniors.
- Available to rent for birthday parties, craft nights, and various events.
- Maximum capacity 59 persons



The Community Hall

- Available to rent for birthday parties, family gatherings, weddings, and more.
- Seating capacity 150 persons, standing 318 persons
- \$38.85/HR
- Local: \$225/Day & Non-local: \$300/Day
- Wedding package: \$610

Community Recreation

Pilot Butte is proud to offer a wide range of community recreation programs and events designed to bring residents of all ages together. From youth sports, fitness classes, and family-friendly activities, to seasonal celebrations and Town-wide events, there's always something happening close to home. Our programs encourage active living, creativity, and connection – giving both the young and young at heart plenty of opportunities to stay engaged, have fun, and be part of the vibrant Pilot Butte community.

Programs

Pilot Butte offers a variety of community programs to suite every schedule and interest – some require registration, while others are free, recurring drop-in activities, providing opportunities for everyone to stay active, engaged, and connected.

- Youth-Night Drop-in
- Adult-Night Drop-in
- Parent & Tot Play Time
- Forever in Motion
- Various Workout Classes
- Various Yoga Classes
- Walking Times
- Summer Ambassadors
- Run Club



Events

Pilot Butte takes pride in hosting a variety of annual Town-run events that bring our community together to celebrate, connect, and create lasting memories throughout the year.

- Bike Rodeo
- Community Garage Sale Weekend
- Deck the Hall Holiday Cheerfest
- Easter in the Library
- Truth & Reconciliation Gathering
- Light Up Pilot Butte
- Parks & Recreation Month
- Pilot Butte Rodeo
- Remembrance Day Service
- Family Day Event
- Halloween in the Hall
- Summer Splash!
- Pickleball Tournament
- Annual Slo-Pitch Tournament



Small Town Features

Painted Fire Hydrants

Pilot Butte is proud to showcase over 70 fire hydrants hand-painted by talented local volunteer artists, each featuring unique and colorful designs that bring character and charm to our community – a true feel-good feature worth exploring, so keep your eye out for your favorite creation!



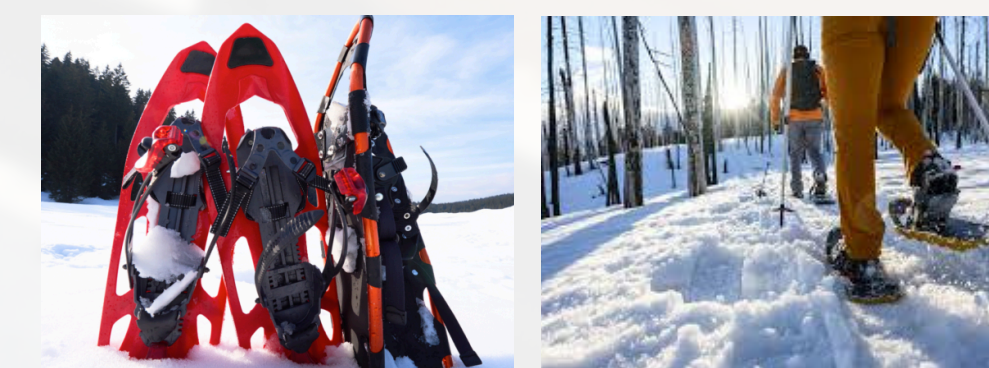
ATV Trails

Nearby trails: Pilot Butte Creek Trail, Pilot Butte Creek Pathway



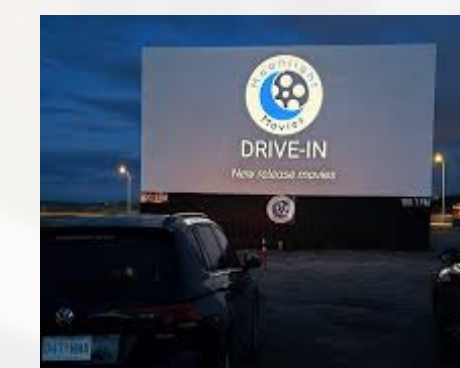
Snowshoe Borrowing Program

The Town of Pilot Butte offers a free snowshoe borrowing program for residents to enjoy our beautiful trails and parks. Snowshoes are available at no cost - simply borrow, explore, and return!



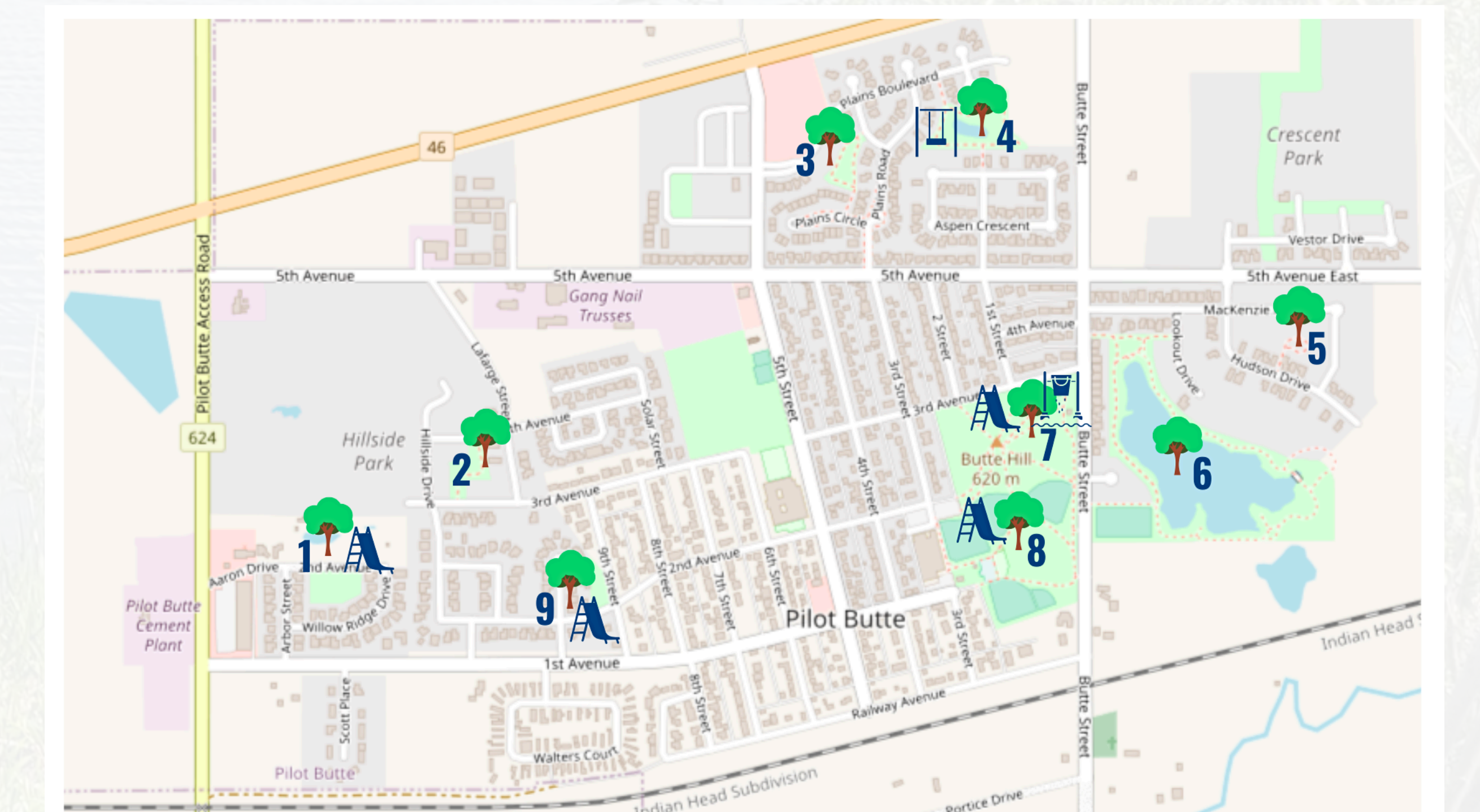
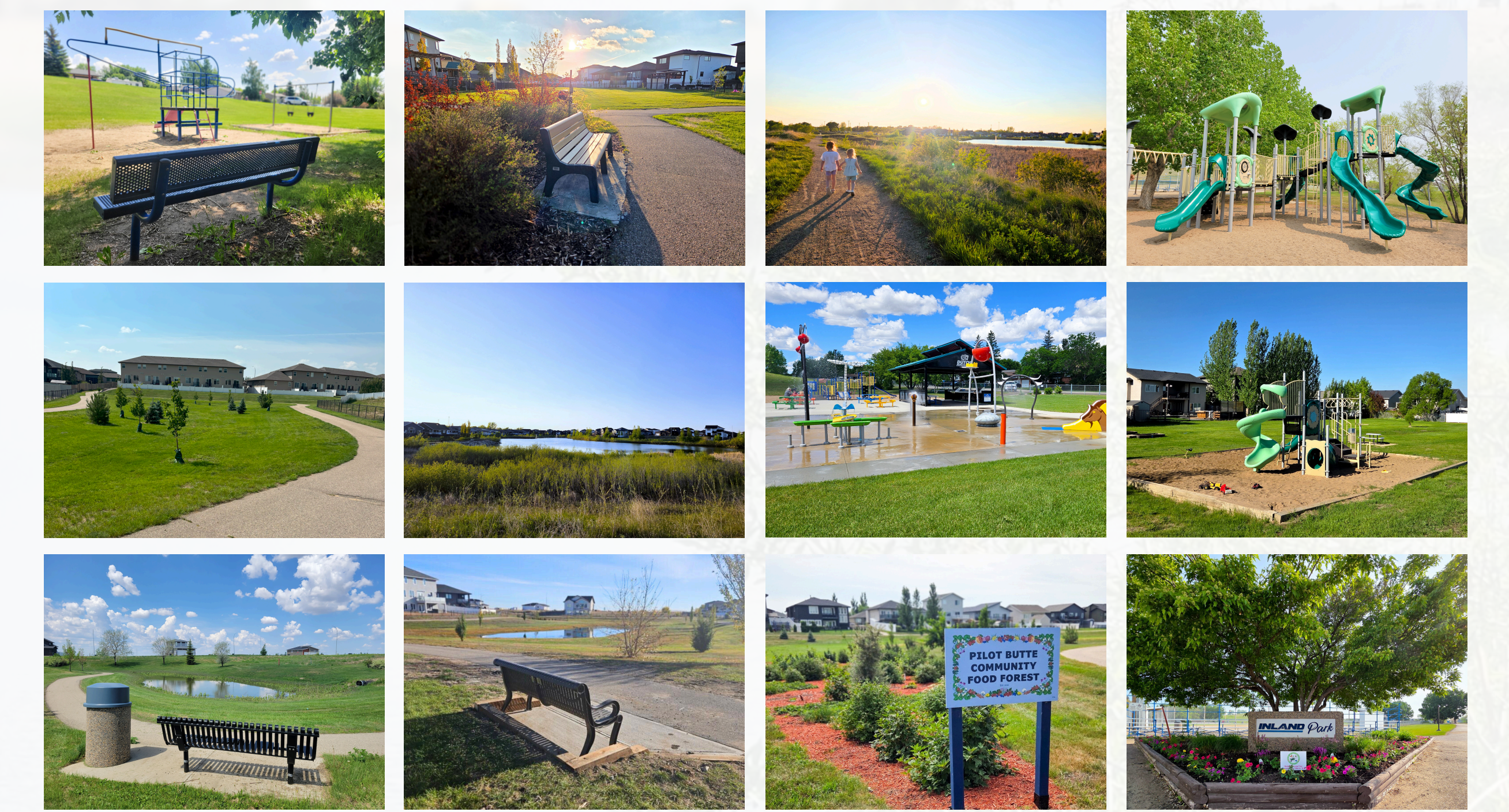
Drive-in Movie Theater

Moonlight Movies offers a drive-in movie experience right here in Pilot Butte! This outdoor theatre is located on the Pilot Butte Rodeo Grounds just off Highway 46. Our outdoor movie theatre brings the community together under the stars, creating that classic small-town feel where friends, families, and neighbors gather to share laughter, stories, and a sense of togetherness.



Parks & Playgrounds

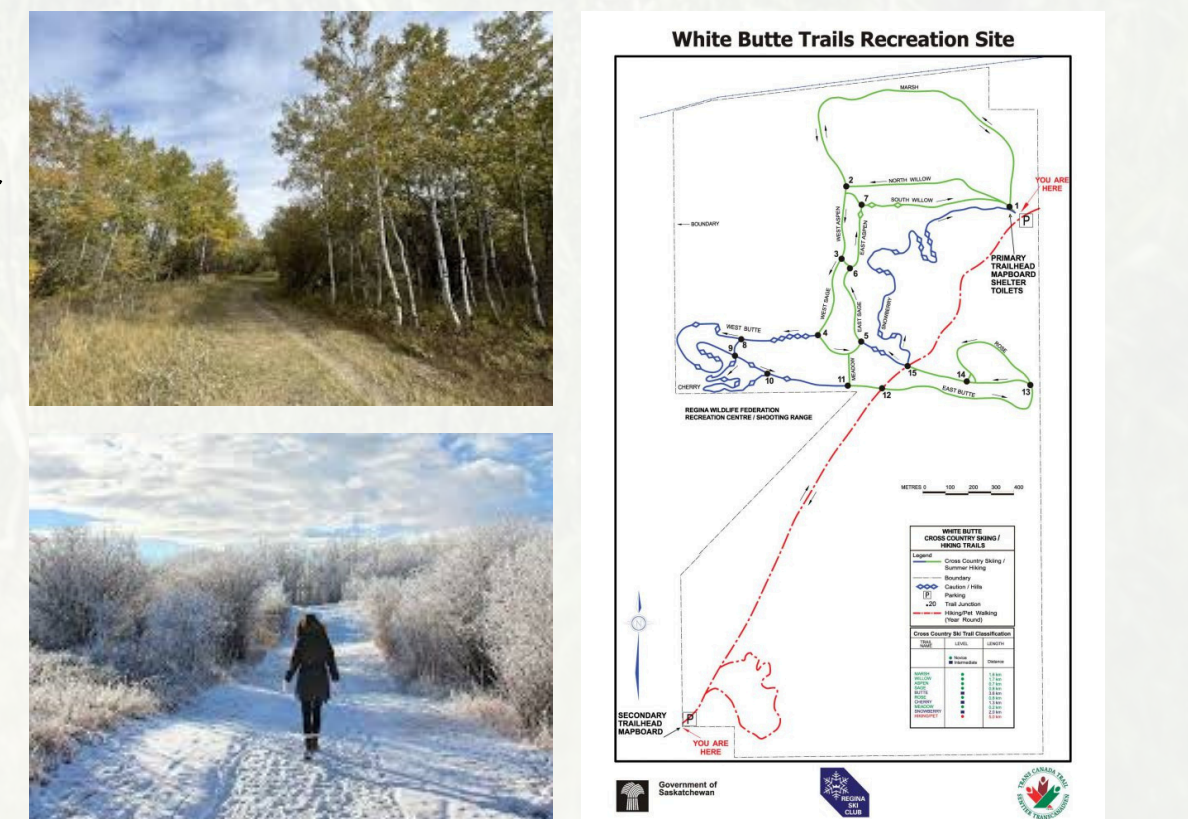
Discover our parks located throughout Town - welcoming spaces designed for everyone to enjoy. With scenic walking paths, inviting playgrounds, comfortable benches, and picnic tables for gathering, each park offers a beautiful experience that inspires relaxation, connection, and appreciation of nature.



1. Aaron Drive
2. Hillside Drive
3. Plains Rd & Plains Way
4. Aspen Cres N.
5. Mackenzie Cr & Hudson Dr
6. Discovery Ridge
7. Spray Park - Butte St & 3rd Ave
8. Inland Park - Recreation Center
9. Helicopter Park - 9th St & 2nd Ave

Walking Paths

Explore the great outdoors with Pilot Butte's local walking paths and nearby trail systems. Just minutes away, the White Butte Trails offer 13 kilometers of scenic, groomed paths through gently rolling, tree-lined terrain – perfect for walking, hiking, cycling, or skiing. Located only 20 minutes east of Regina, the White Butte Recreation Site features convenient amenities including two parking lots, warm-up shelters, and an outdoor restroom, making it an ideal destination for outdoor enthusiasts year-round.



Committees of Council

Town Council 2024–2028



Peggy Chorney
Mayor



Scott Einarson
Deputy Mayor



Zac Forster
Councillor



Noreen Lolacher-Lang
Councillor



Lydia Riopka
Councillor



Ed Sigmeth
Councillor



Don Turner
Councillor

Parks, Recreation, Arts and Culture Advisory Committee (PRAC)

The Parks, Recreation, Arts and Culture Advisory Committee is established to support and facilitate the achievement of the Town of Pilot Butte's vision, goals and to advise Council on matters relevant to the Town's sport, arts, culture, and recreation activities.

The Committee's key objectives are to:

- Raise the profile of parks, recreation and culture through positive support and promotion in the community.
- Encourage and support volunteerism and volunteer organizations within the Town.
- Identify concerns and present constructive solutions for the Town of Pilot Butte's programs, facilities, open spaces, trails and events.

Dog Park Advisory Committee

The role of this Committee is to investigate, consider and provide recommendations to Council regarding various aspects of a new dog park in Pilot Butte, including:

- Promote the proper use of the off-leash dog park by communicating the rules of conduct to dog owners using the park
- Fundraising and grant opportunities
- Capital costs
- Dog park location

Traffic Advisory Committee (TAC)

The Traffic Advisory Committee is established to provide recommendations to the Council of the Town of Pilot Butte with regard to community and roadways safety within the Town. The TAC also provides a community perspective on several safety issues and promotes public awareness and education for road safety initiatives and programs to mitigate safety risks and hazards and to enhance community participation and cooperation.

Beautification Committee

The role of the Beautification Committee: To work on beautification projects that are visually appealing in the Pilot Butte community. To enhance and beautify green space areas in the town of Pilot Butte. To promote community pride through Town beautification projects.

The Committee's key objectives are:

- Evaluate areas in need of attention
- Support the prioritization and development of these areas
- Develop a process and plan of beautification
- Explore and determine the potential for future garden and landscaping areas in town

Multi-Use Facility Development Committee (MUFDC)

The Multi-Use Facility Development Committee serves as an advisory committee to Town Council, providing guidance, strategy, and support in advancing the development of a future multi-use facility in Pilot Butte. The primary purpose of the Committee is to lead and coordinate fundraising efforts that will support the development of a future multi-use facility, which includes identifying funding opportunities, organizing community-driven initiatives, cultivating partnerships, and providing strategic recommendations to Council to secure the financial resources necessary to meet future community recreation needs.

The Committee's key objectives are:

- To provide recommendations on funding strategies and budget management.
- Plan, coordinate, and evaluate fundraising events and campaigns that engage residents, businesses, and regional stakeholders.
- Monitor and report on fundraising progress, ensuring transparency, accountability, and responsible financial management.

Economic Development Committee

The Community Economic Development Committee is an advisory committee of Council with a mandate to provide guidance in economic initiatives within the Town of Pilot Butte.

The Committee's key objectives are:

- Provide input on business retention, attraction and expansion opportunities in the Town of Pilot Butte.
- Provide advice and recommendations to the Pilot Butte Town Council respecting economic development.
- Act as a champion for the Town of Pilot Butte as an attractive environment for existing and prospective businesses.

Arts and Culture Committee

The Pilot Butte Arts & Culture Committee brings creativity to the community through weekly registered arts classes for all ages. Each year, the committee hosts signature events including the Crocus Art Show, the annual Artist Retreat, and the popular Everything Christmas Sale—celebrations that showcase local talent and strengthen community connection. Dedicated to fostering artistic expression and cultural growth, the committee provides vibrant opportunities for residents to learn, create, and experience the arts together.

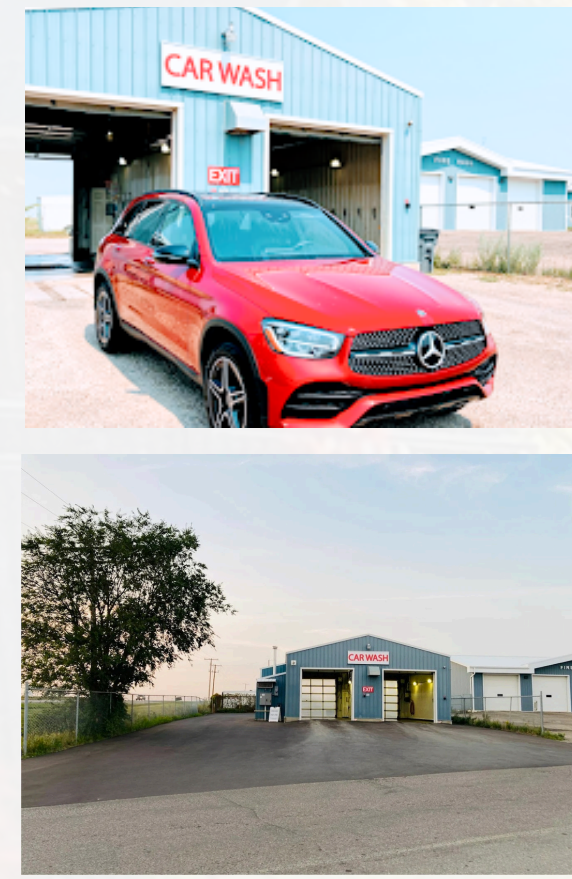


Rodeo Committee

The Rodeo Committee proudly organizes Pilot Butte's annual rodeo, held every June on Father's Day weekend. This much anticipated community tradition brings together families, competitors, and visitors for a weekend of exciting events and authentic rodeo spirit. This weekend is packed with entertainment for the whole family including chuckwagon and chariot races, community parade, rodeo events, children's activities and a cabaret.



Local Amenities



Domo Gas Station

- 5th Ave
- Our gas station offers fuel, friendly service, and essential on-the-go amenities for residents and travelers alike.

Car Wash

- 2000 Aaron Drive
- Our local car wash delivers quick, reliable service to keep your vehicle clean and shining year round.



Pharmacy – White Butte Pharmacy

- 1505 Aaron Drive, New Horizon Business Center
- Providing trusted, convenient care with essential medications, health products, and knowledgeable support.



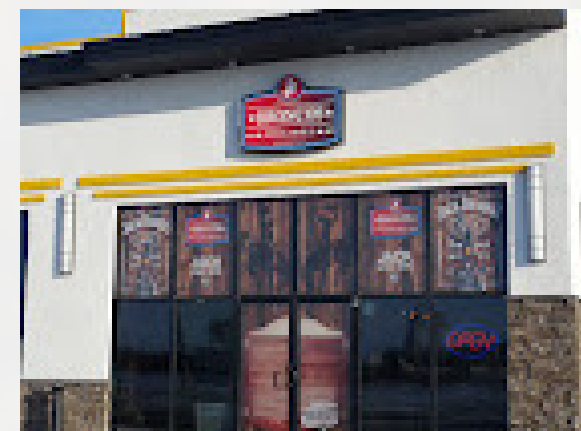
Grocery Store – A & D Fresh Market

- 1505 Aaron Drive, New Horizon Business Center
- Offering convenient, fresh, and friendly service, making everyday shopping easy and accessible.



Hair Salon – Hot Shades

- 1505 Aaron Drive, New Horizon Business Center
- First opened in 2015, this hair salon is locally owned offering plenty of services in hair and esthetics.



Multiple Restaurants

- 1505 Aaron Drive, New Horizon Business Center
 - Bronco's Pub & Grill, Alex Pizza, Subway
- 156 4th St
 - Pilot Butte Bar & Grill (previously Dosu Wok).



St. Agnes Catholic Church

- 403 5th Street
- Our local Catholic Church provides a welcoming place for worship, community connection, and spiritual support for residents of all ages.



Way of Life Church

- 233 5th Street
- Offering a warm, inclusive space for worship, community gatherings, and meaningful support for individuals and families.



Post Office

- 216 5th Street
- Our post office offers more than just a place to pick up your mail, it offers a place to run into friendly neighbors and a spot to pick up our local News and Views newsletter.



Fire Hall

- 1500 Aaron Drive
- The Pilot Butte Fire Department currently has 23 volunteers including 7 officers, 16 firefighters, and 6 first responders



Library

- 222 Diamond Place, in the Recreation Centre
- With access to reading materials, digital resources, community programs, and quiet study areas, the library supports both lifelong learning and everyday recreation.



Licensed Childcare Facility – Pilot Butte Early Learning Centre

- 1505 Aaron Drive, New Horizon Business Center
- Ages 18 months to school age (6+)

+ Licensed and private dayhomes/preschool



Elementary School – Pilot Butte School

- 301 6th Street
- The school has 18 classrooms, several specialized areas, a large gymnasium, and several playgrounds



Before & After School Program

- Ran and facilitated by Kare 4 Kids out of our Town's Community Hall.
- This program accommodates school age children from K - 8 providing educational and hands on activities designed to enrich social, physical, and educational well-being!

Summer Camp Program

- Ages 6 to 13. This camp runs July through August directly in Pilot Butte with lots of fun weekly themed activities!



Dance Studio – Dance Sensations by Desire

- 420 Meadowview Crescent
- Provides high-quality recreational and competitive dance instruction in a safe, supportive environment. Their mission is to inspire a passion for dance while encouraging exploration, self-expression, and confidence.



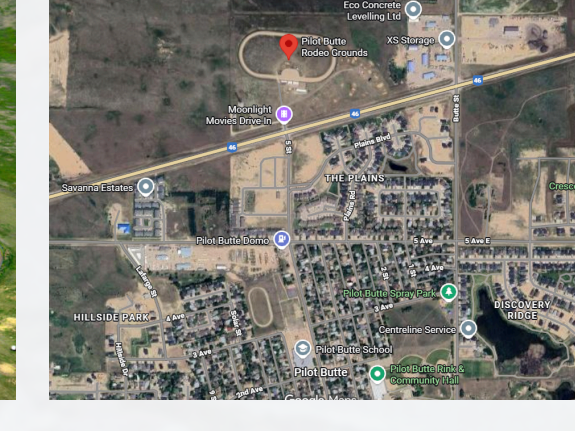
Senior Home

- 108 8th Street
- Providing support for all levels of care, this senior care home offers a warm friendly atmosphere where everyone feels welcome.



Cemetery

- Butte Street South immediately after the tracks.
- The Town's cemetery provides a peaceful, well-maintained resting place that honors our community's history and the loved ones who came before us.



Rodeo Grounds

- Off HWY #46
- The Town's Rodeo Grounds serve as a vibrant community venue, hosting annual rodeo events, Town gatherings, and rental opportunities.



Darcy Acres Feed and Supply

- 1000 Access Rd #101
- A local supplier offering animal feed and care products, farms and garden products and services, including delivery and snow removal.

Municipal Heritage Property – The Butte

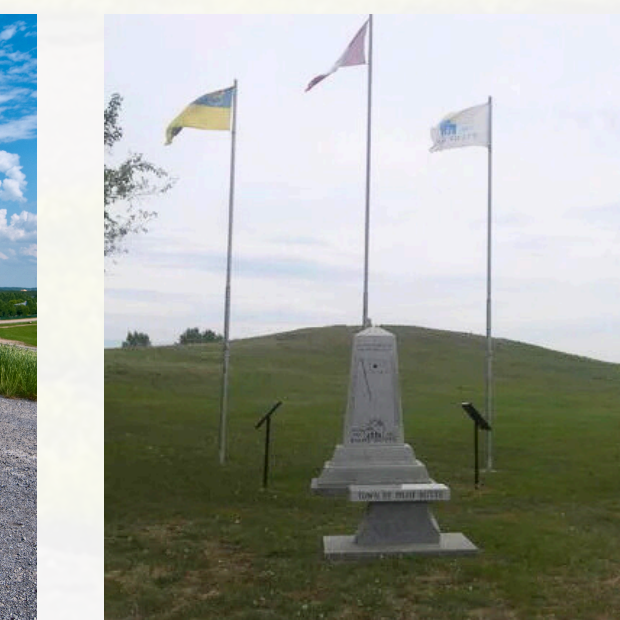
The Butte is a landmark hill that gives the Town of Pilot Butte its name. The Butte is a small broad mesa that stands about 23 meters above the surrounding Town of Pilot Butte. It is located at 3rd Ave and Butte Street right behind the local Spray Park and adjacent to the Municipal Office and ball diamonds.

The Butte holds a significant history of being used as a vantage point for the Indigenous people long before the Town of Pilot Butte first settled in 1882. The Butte made a meaningful influence in 1883 as the name "Pilot Butte" was chosen for the current Town, which means "Lookout Point".

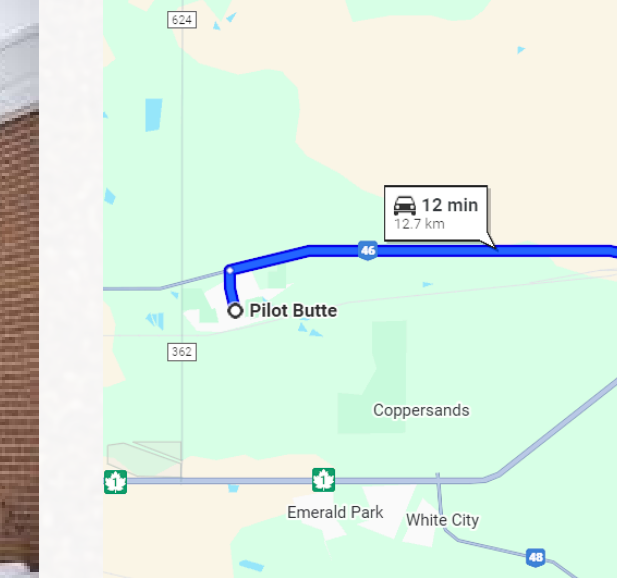
The Butte also qualifies as an Ecomuseum both for its history and its natural and native flora. On the Butte you may find the following plants which have grown on site:

- Prairie Wool
- Grama Grass
- Three flowered avens
- Crested Wheatgrass
- Crocus flowers
- Purple Vetch
- Broughram Grass
- Sage

In 2023, the Town of Pilot Butte declared Butte Hill as a Municipal Heritage Property to preserve its rich history and protect the native plant species that thrive there. This designation ensures the hill remains a valued natural and cultural landmark for future generations.

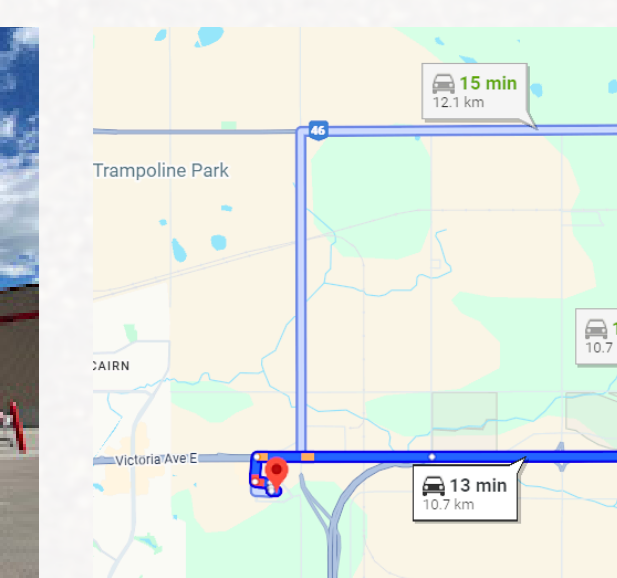


Other Nearby Amenities



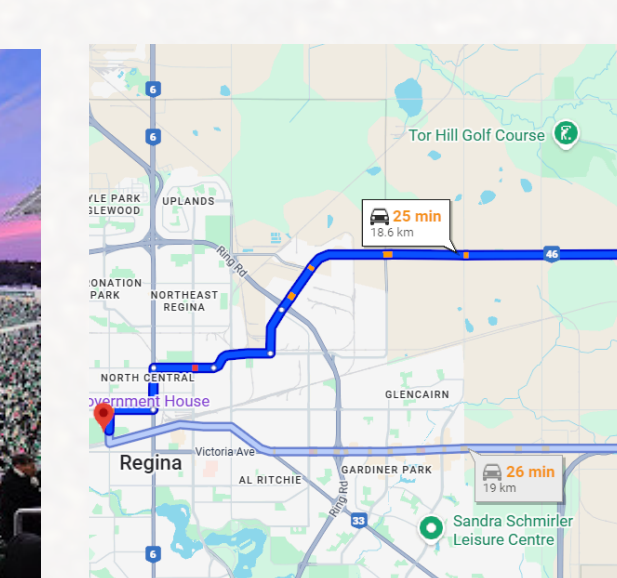
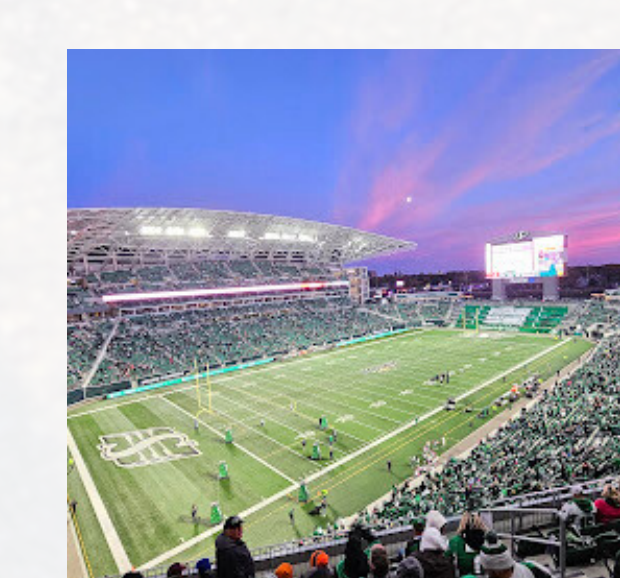
Greenall High School

A Secondary Education located in Balgonie, only 12 KMs from Pilot Butte. This High School offers grades 9 through 12 and serves Pilot Butte as well as Balgonie and nearby communities of Coppersands, Edenwold, Kronau, McLean, and White City. Bus service is available from Pilot Butte to Greenall High School.



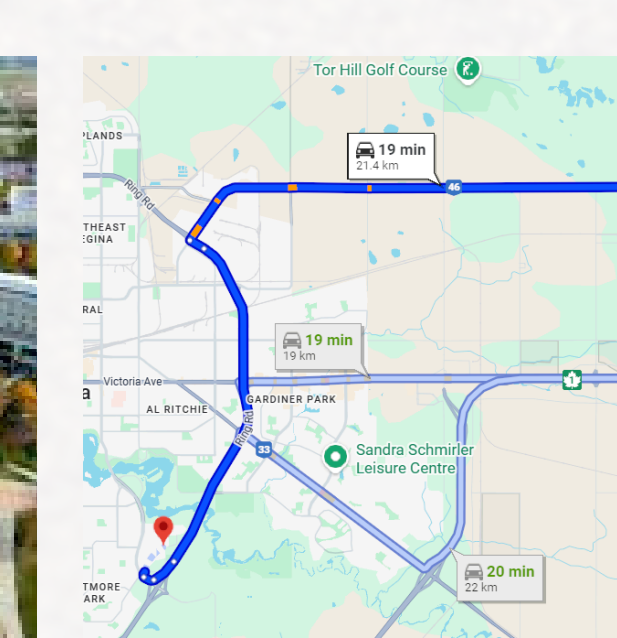
Regina East End Shopping

Regina's east end offers a wide range of major retailers, local shops, and essential services such as grocery stores. It is only 10.7 KMs from Pilot Butte and continues to serve as a convenient resource for residents not only within the city but surrounding areas like Pilot Butte as well.



Mosaic Stadium

Home to the Saskatchewan Roughriders, this stadium delivers a wide range of event experiences and is only 18.6 KMs from Pilot Butte.



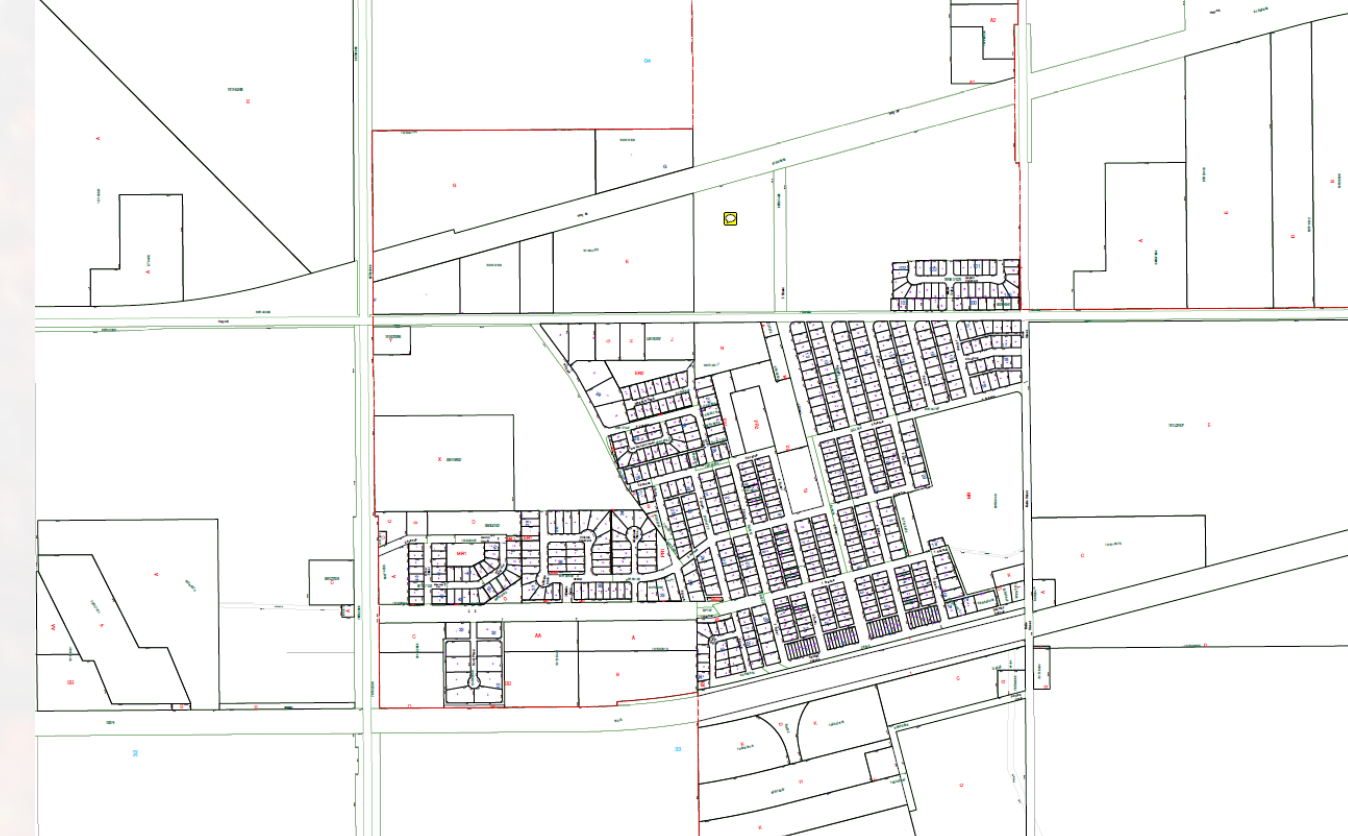
University of Regina

The University of Regina is just 21.4 KMs from Pilot Butte, giving residents easy access to higher education, cultural events, and community programs.

Community Growth & Engagement

Population & Town Growth since 2011

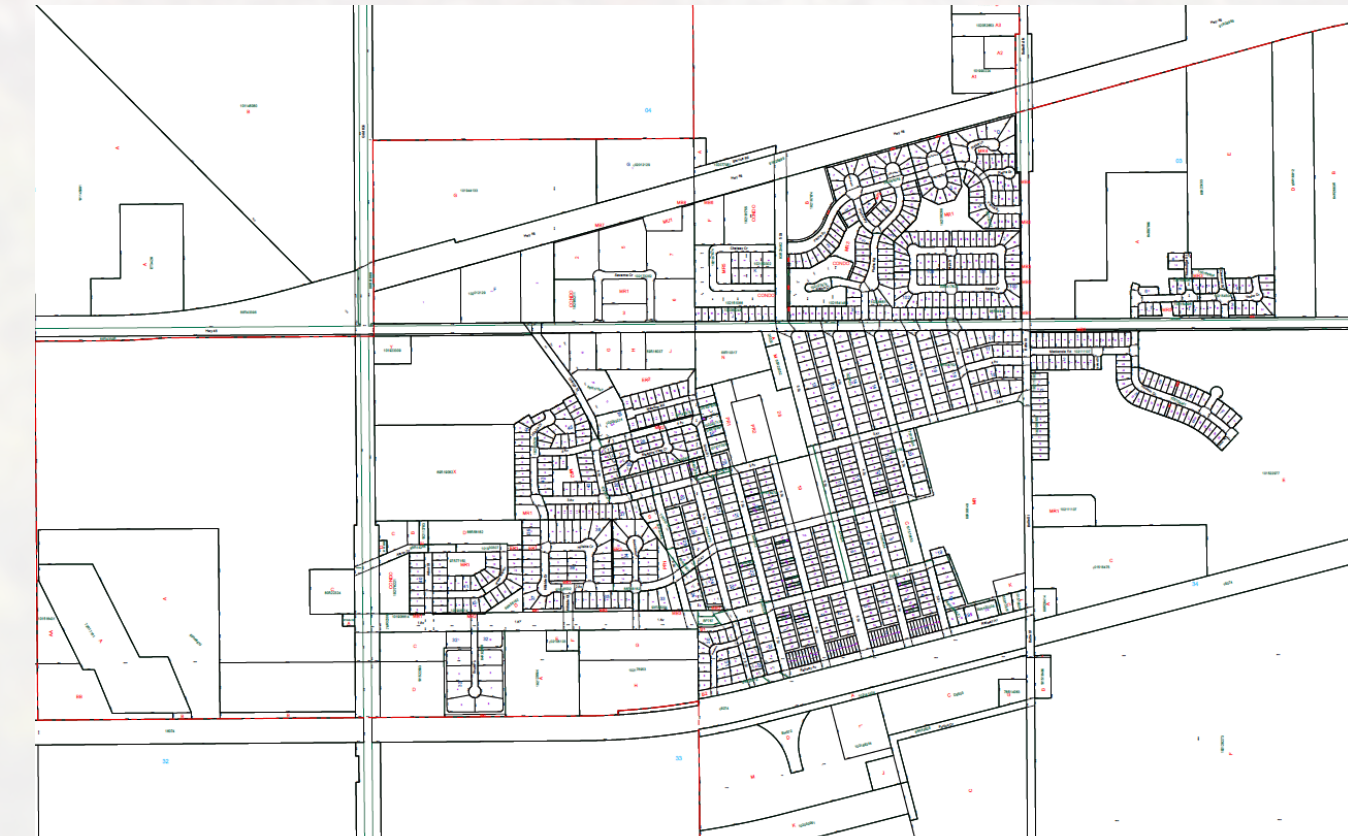
Statistics Canada Census of Population 2011: 1848
Map date: February 2011



2010 Aerial Photo



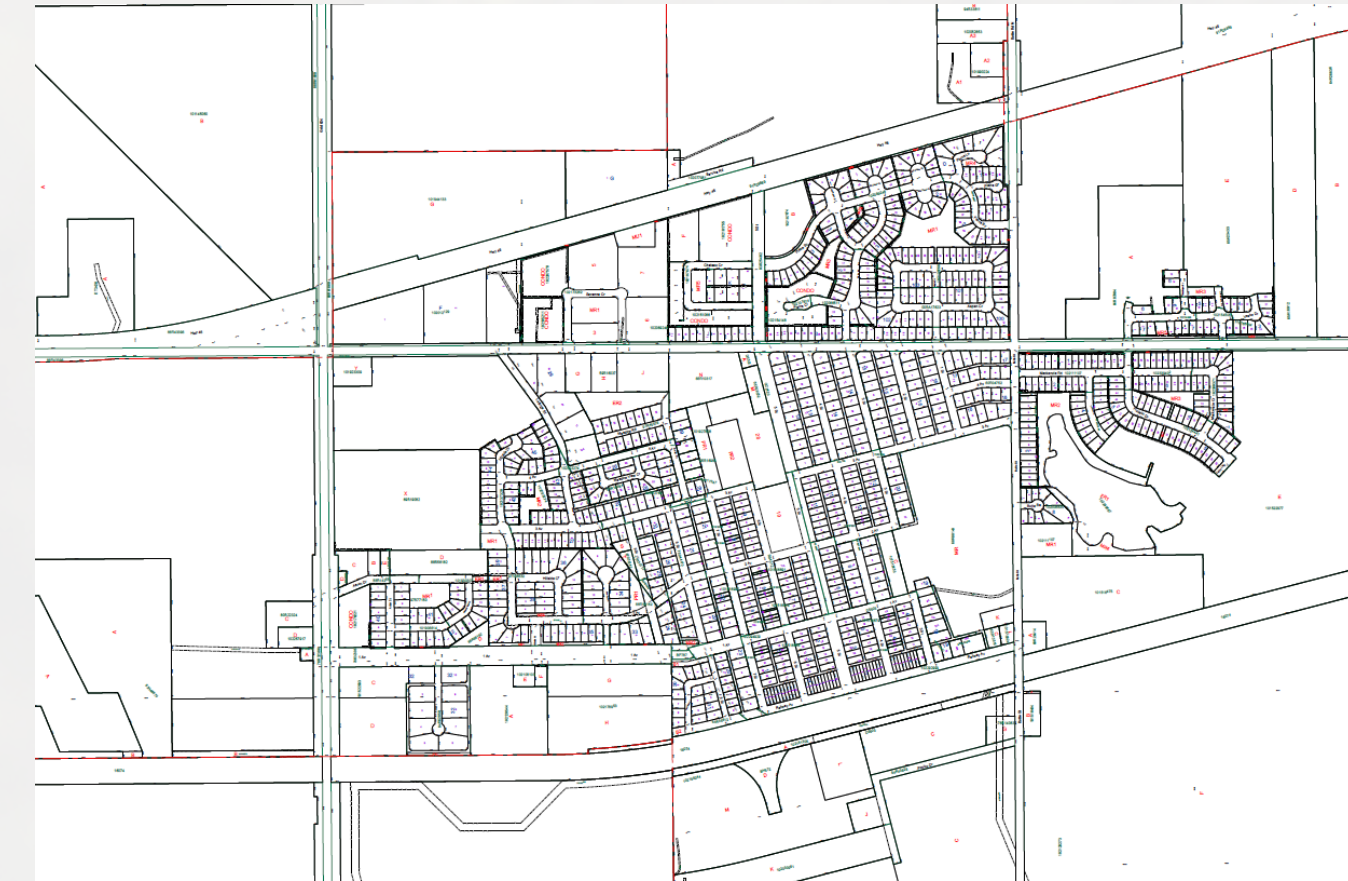
Statistics Canada Census of Population 2016: 2137
Map Date: June 2016



2014 Aerial Photo



Statistics Canada Census of Population 2021: 2638
Map date: February 2022



2019 Aerial Photo



A trip down memory lane

1882
Settlement began. Sand & gravel deposits were utilized for construction of the Canadian Pacific Railway through the region, which was completed in 1882

1884 - First Brick plant developed, employing over 800 people

1913 - incorporated as a village then disbanded in 1923 following war years.

1963 - re-incorporated as a village

1980 - incorporated as a town

2016 - 2021 - fastest growing population centre in Saskatchewan, as per the 2021 Canadian Census

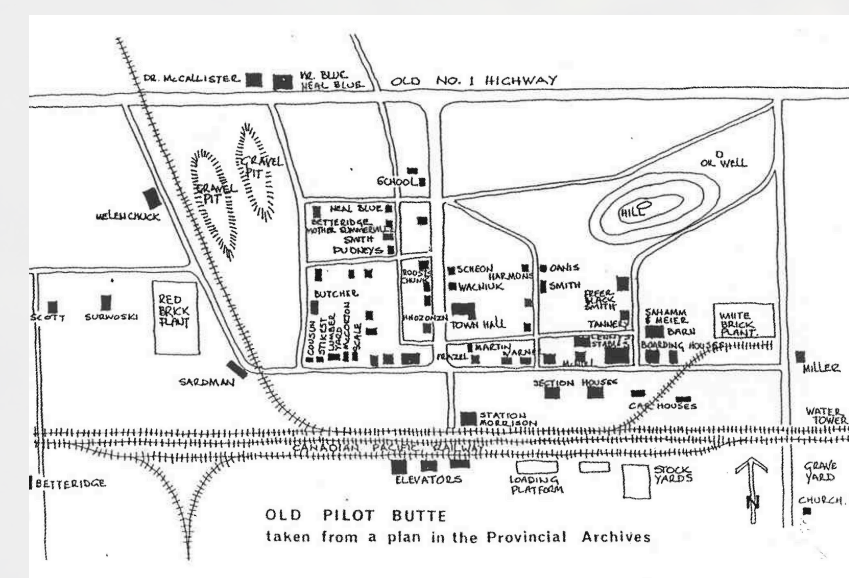
1982 - a 100 year anniversary was celebrated and a monument erected on the Butte.



CPR Station in 1915 Courtesy of the CPR Archives



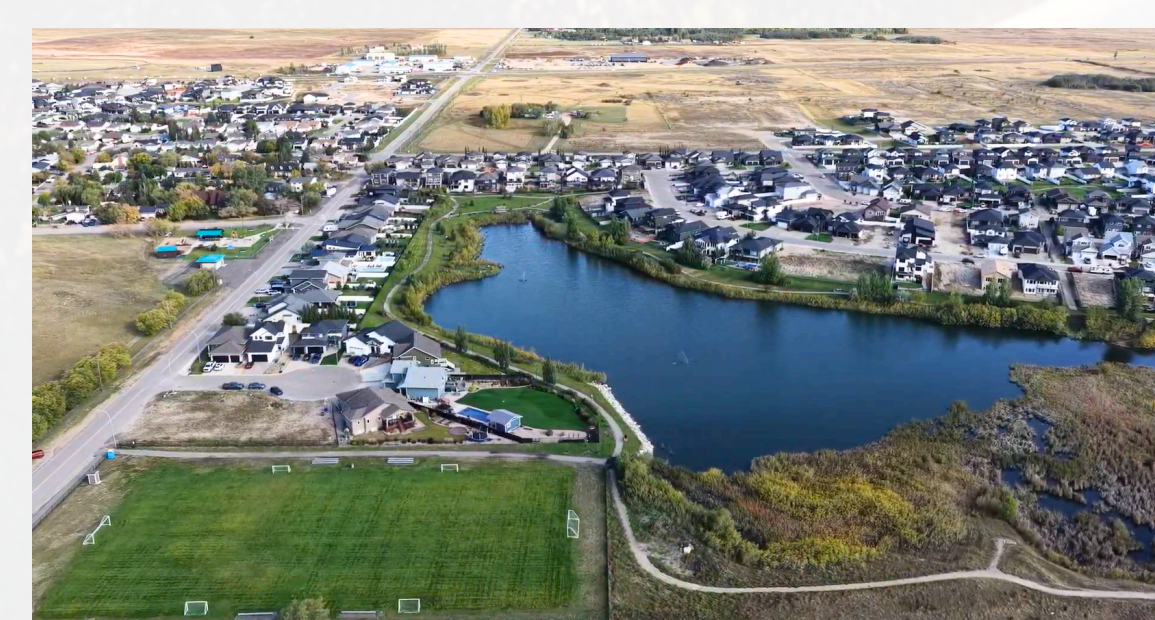
Pilot Butte 1956 aerial photo from George Poutney



Pilot Butte from Provincial Archives (date unknown)

Subdivision Growth 2014 - 2019 - 2025

Discovery Ridge



Crescent Park



The Plains



Hillside Park



Budget Open Houses

The Town of Pilot Butte hosts local budget open houses to ensure residents have opportunities to ask questions, and share feedback directly with Town Council and Administration. These sessions help build transparency, strengthen community relationships, and guide informed planning that reflects local needs and values. By encouraging open dialogue, the Town fosters a sense of collaboration and shared ownership in the future of the community.



Meet with the Mayor

The Town offers "Meet the Mayor" sessions which provide residents with an open and welcoming opportunity to connect directly with local leadership, ask questions, and share perspectives. These meetings strengthen transparency and community engagement by encouraging meaningful dialogue between citizens and the Mayor.



Council Meetings

Council meetings are open to the public, ensuring transparency and allowing residents to observe municipal decision-making. Meetings are normally held the 2nd and 4th Monday of each month. Council also holds Administration meetings on the 1st and 3rd Wednesday of the month. These meetings are for discussion only, no resolutions are made. Unscheduled Special Meetings are advertised in advance for public attendance.

Residential Surveys

The Town of Pilot Butte regularly engages residents through a variety of surveys—some addressing major long-term initiatives, while others focus on gauging interest, awareness, or preferences on specific topics. Each survey, regardless of scope, provides valuable insight that helps guide planning, inform policy, and support thoughtful decision-making for the community's future.

Recent examples of residential survey:

- Seniors Programs & Community Survey - 2026
- Name the Parks - 2025
- Monday evening preferred workout class style - 2025
- Summer Ambassador Feedback Survey - 2025
- Multi-Recreational Development Intake - 2023 - 2024
- Recreation Needs Assessment - 2023
- Health Services Survey - 2020



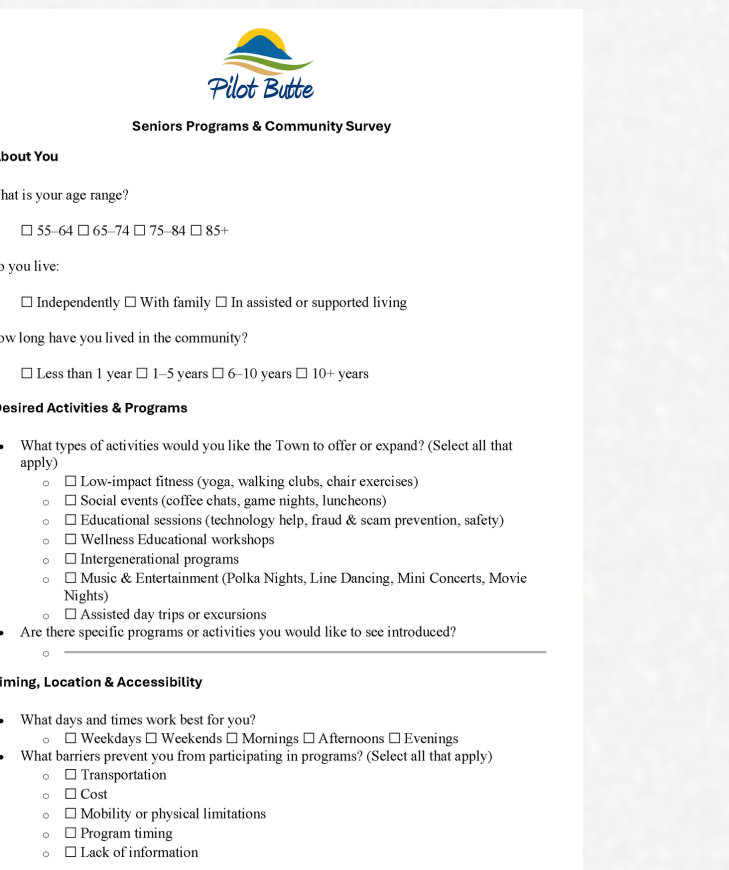
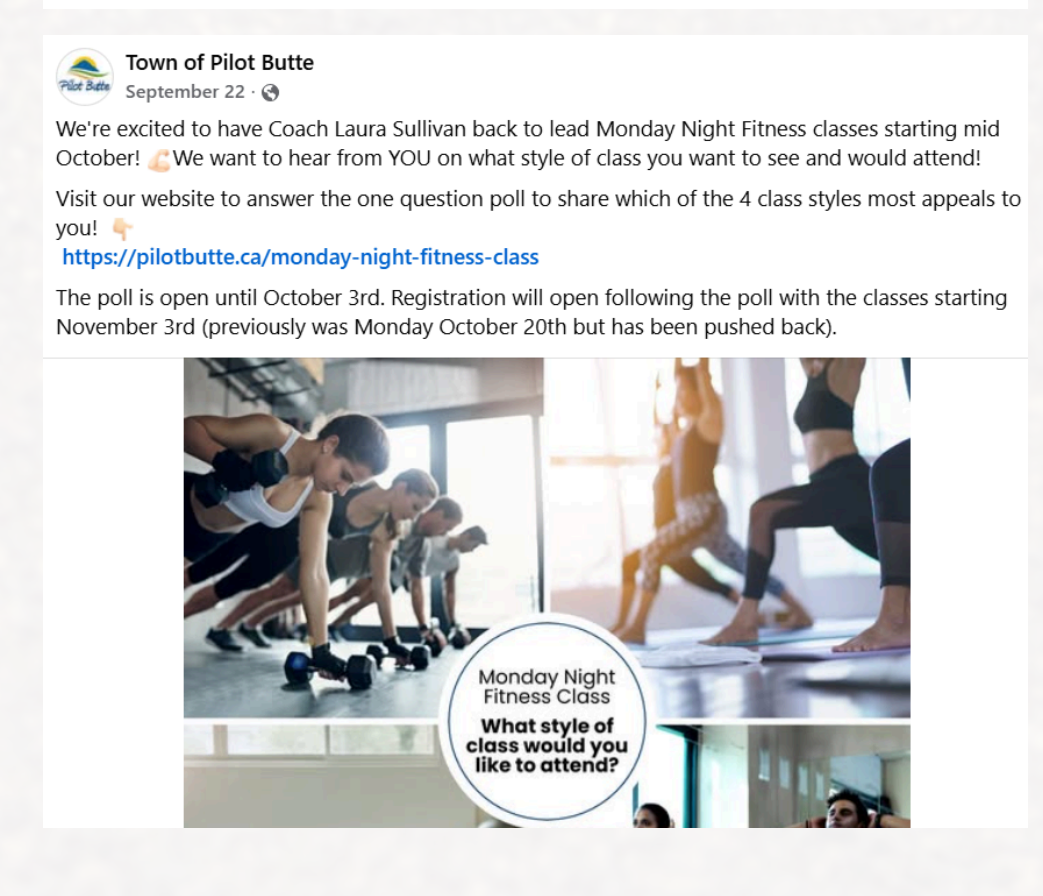
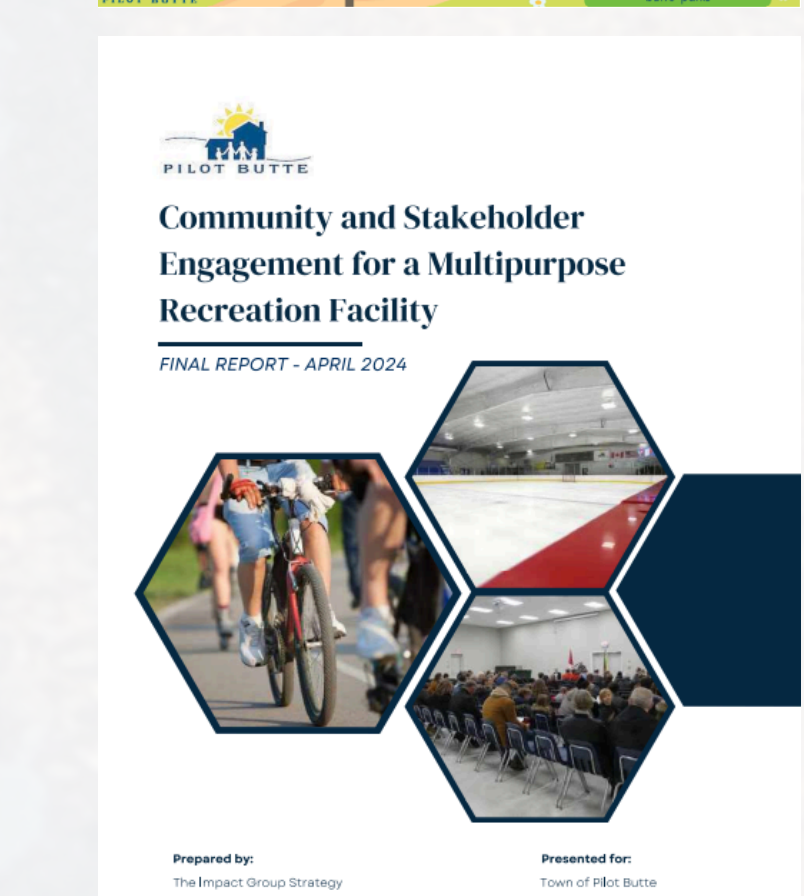
Summer Ambassador Survey

It was an amazing summer with our 2025 Summer Ambassadors! The Summer Ambassadors provided recreation activities to our community for all ages on a daily basis throughout July and August. Funding was received from the Canada Summer Jobs grant to support this program.

We want your feedback on the 2025 Summer Ambassador Program! Please answer the questions below to provide us insight on the Summer Ambassador program and for future planning.

Community Health Care 2020

The Town of Pilot Butte and Town Council are asking you for your feedback regarding health services in our community. Residents and medical professionals have approached our Town, asking for an update on current and future opportunities. In order to best plan and advocate for residents and residents of surrounding areas needs, we are asking you to please provide your feedback by completing this survey no later than Feb 24, 2020.



Multi-Use Facility

**Be a Part of a Shared Vision.
A Smart Investment.
A Stronger Community.**

Help shape the next generation of recreation, wellness, and community connection in our municipality.



Why We're Planning for the Future

Current Pressures:

- Growing population and increased demand for resources and recreational amenities
- Aging facilities nearing capacity and lifecycle limits
- Facilities operating at or beyond capacity, limiting revenue growth and program expansion
- Limited ability to accommodate various user groups and expansion of municipal staff

What a New Multi-Use Facility Could Offer

Future Opportunities:

- Expanded community services & programming
- A central hub for connection & wellbeing
- Support for sustainable growth & economic vitality
- Efficient use of additional municipal resources and space

Designated Site Location

The selected location is the land adjacent to the Water Treatment Plant between Highway #46 and 5th Avenue. This land is owned by the Town.



Financial Planning

The Town actively seeks funding available through Provincial and Federal grant opportunities and is looking for partnerships, sponsorships and donations to assist with the cost of the future Multi-Use Facility.

Establishment of the Multi-Use Facility Development Committee

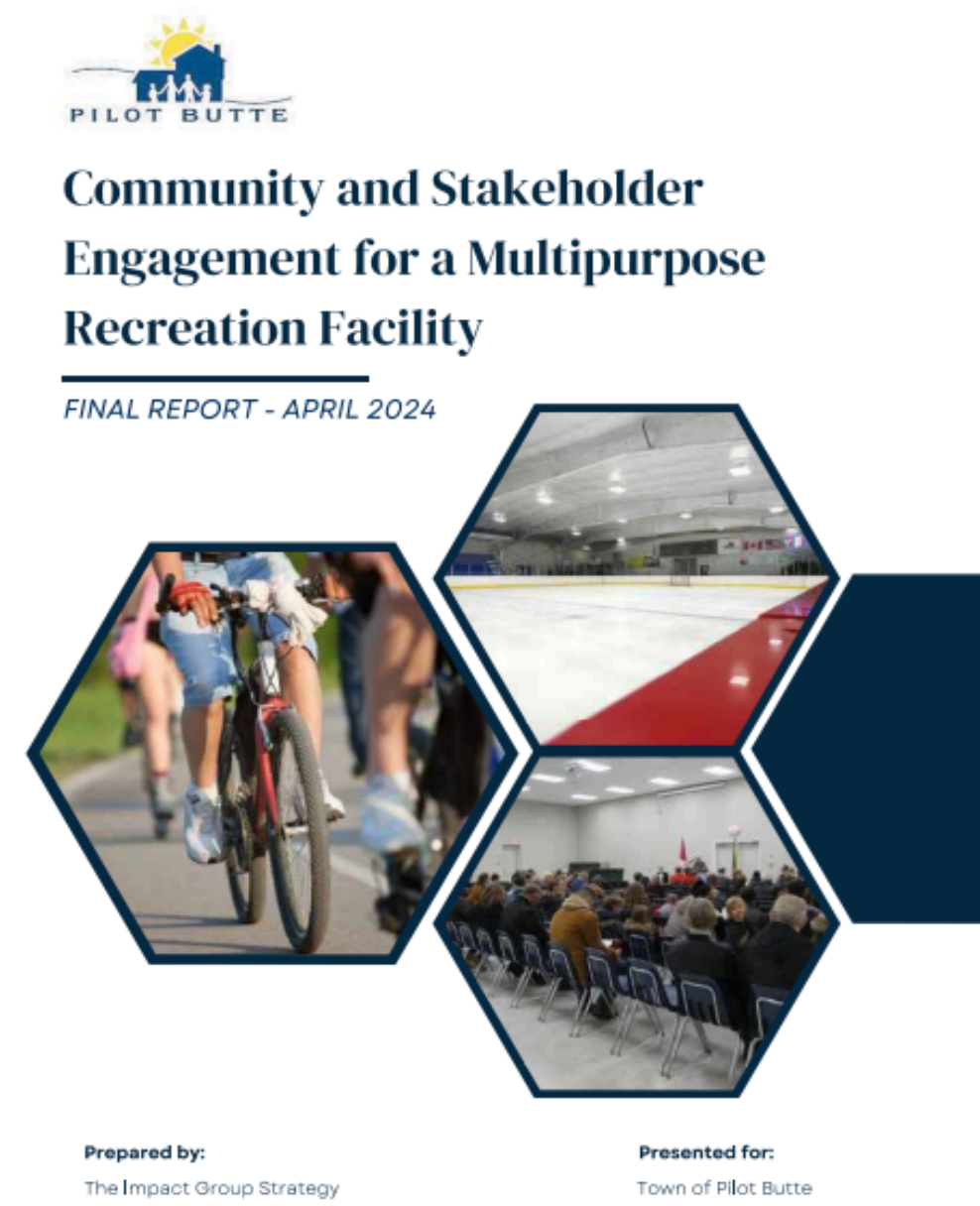
In February 2025, a Multi-Use Facility Development Committee was created. The Multi-Use Facility Development Committee serves as an advisory committee to Town Council, providing guidance, strategy, and support in advancing the development of a future multi-use facility in Pilot Butte. The primary purpose of the Committee is to lead and coordinate fundraising efforts that will support the development of a future multi-use facility, which includes identifying funding opportunities, organizing community-driven initiatives, cultivating partnerships, and providing strategic recommendations to Council to secure the financial resources necessary to meet future community recreation needs.

Engagement Activities

In November 2023, the Multi-Use Facility project started with securing Impact Group Consulting to conduct a Recreational Needs Assessment in the community. In December of 2023, community engagement began for residents, stakeholders and user groups to provide their input on the needs and priorities for Pilot Butte's Recreation. This community engagement consultation included:

- Public Survey
- Stakeholder Focus Groups
- Community Group Questionnaires
- Public Open Houses
- Indigenous Engagement

In April 2024, a report was completed summarizing the community input and survey results and posted on the Town website for resident viewing.



Key Findings

Summarized as follows are key findings from the research and engagement that informed the Recreational Needs Assessment.

#	FINDING	IMPACT ON RECREATIONAL NEEDS & PLANNING
1	Satisfaction levels are relatively strong with room for improvement	<ul style="list-style-type: none"> • The majority of respondents reported that they were "somewhat satisfied" with the overall state of recreation in the community. • As the region grows it is likely that expectations for recreational opportunities will continue to increase and diversify.
2	Residents are involved in a wide array of recreation activities and use a number of different spaces for these activities	<ul style="list-style-type: none"> • A lack of facilities, indoor spaces and recreational opportunities results in high frequency of commuting to surrounding communities and Regina. • The Town of Pilot Butte will need to continue working to ensure that there are a diversity of recreational opportunities.
3	There exists a high desire for capital development (new and/or enhanced facilities)	<ul style="list-style-type: none"> • Residents, Stakeholders & Community Groups believe that a new and/or enhanced facilities are needed in the Town of Pilot Butte • Development should be lead collaboratively
4	Inclusive facility	<ul style="list-style-type: none"> • Participants highlighted the importance of creating inclusive spaces that are welcoming to all ages and recreational activities
5	Seek minimal cost option	<ul style="list-style-type: none"> • Seek minimal-cost option and minimal cost impact/tax burden on residents. • Residents want to see a variety of financing options, operating models, partnerships, and grants to support the projects development.
6	Build it all at once vs. phasing	<ul style="list-style-type: none"> • Initially, there was a clear preference for the Multipurpose Recreation Facility to be built all at once rather than phased over time. However, most in-person participants agreed that a phased approach reduced the individual cost burden on residents as they prefer to maintain the affordable cost of living attribute in Pilot Butte.
7	The community is young and continues to experience growth	<ul style="list-style-type: none"> • Recreation is an important community building mechanism. As such, it will be important to integrate new residents into recreation programs and opportunities. Future growth is likely to continue to drive demand for new or expanded facilities.

Preliminary Infrastructure Priorities (Indoor)

The following chart provides a preliminary ranking of indoor infrastructure priorities based on community demand as identified through the various engagement findings. This preliminary ranking is intended to provide a point of reference for further discussion, analysis and prioritization.

Facility/Amenity	Indoor Rank	Public Survey & Open House Discussions	Stakeholder Focus Groups	Community Group Questionnaire
Fitness Facilities	1	✓✓✓	✓	✓
Aquatics	2	✓✓✓	✓	✓
Ice Arenas	3	✓✓✓	✓	✓
Gymnasium	4	✓✓✓	✓	✓
Social Gathering Spaces	5	✓✓	✓	✓
Multi-Purpose Program Rooms, Library Spaces	6	✓✓	✓	✓
Indoor Children's Play Space	7	✓		
Curling Facility	8	✓		
Arts & Craft Space (Studio)	9	✓	✓	✓
Youth Centre	10	✓		
Climbing Walls	11	✓		
Senior Centre	12	✓		✓
Other	13			
Performs Arts / Theatre	14			

Ranking Rationale Legend
Public Survey: Three (3) checks if identified as a priority by >50% of respondents; 2 checks if identified as a priority by 30% - 49% of respondents; 1 check if identified as a priority by 20% - 29% of respondents.
Stakeholder Focus Groups: 1 check if identified as a priority/need by multiple groups.
Community Group Questionnaire: 1 check if identified as a priority by more than 20% of responding groups.

Preliminary Infrastructure Priorities (Outdoor)

The chart below provides a preliminary ranking of outdoor infrastructure priorities based on community demand as identified through the various engagement findings. This preliminary ranking is intended to provide a point of reference for further discussion, analysis and prioritization.

Facility/Amenity	Indoor Rank	Public Survey & Open House Discussions	Stakeholder Focus Groups	Community Group Questionnaire
Outdoor Aquatic Facilities	1	✓✓✓	✓	✓
Community Park Space	2	✓✓✓	✓	✓
Community Trails (Gravel)	3	✓✓✓	✓	✓
Natural Surface Trails	4	✓✓	✓	✓
Sports Fields	5	✓	✓	✓
Outdoor Paved Courts	6	✓	✓	✓
Ball Diamonds	7	✓	✓	✓
Outdoor Rinks	8	✓		
Day Use Areas	9			
Outdoor Fitness Equipment	10	✓		✓
Campgrounds	11	✓		
Senior Centre	12			
Other	13			
Skateboard/BMX Track	14			

Ranking Rationale Legend
Public Survey: Three (3) checks if identified as a priority by >50% of respondents; 2 checks if identified as a priority by 30% - 49% of respondents; 1 check if identified as a priority by 20% - 29% of respondents.
Stakeholder Focus Groups: One (1) check if identified as a priority/need by multiple groups.
Community Group Questionnaire: One (1) check if identified as a priority by more than 20% of responding groups.

Be Part of What's Next for Pilot Butte

Our community is planning for a future Multi-Use Facility designed to bring people together, support active living, and create a vibrant hub for all ages to enjoy. We invite local businesses, organization, and community members to help shape this legacy project.

Why Invest?

- High visibility with long term brand exposure
- Demonstrated commitment to community well-being and growth
- Direct access to a broad and diverse audience
- Customizable marketing opportunities
- Build your legacy, help strengthen our community

Sponsorship Opportunities

- Facility or major area naming rights
- Specific rooms such as community meeting rooms, studios, indoor track, and more.
- Program and event sponsorships
- On-site advertising and signage
- Special amenities such as fitness equipment, locker rooms, play areas, water bottle filling stations, and more.



Want to Get Involved?

Join us in shaping a dynamic Multi-Use Facility that will serve our community for generations. Sponsorship partners will gain meaningful visibility, demonstrate community leadership, and support inclusive recreation, health, and connection. Let's work together to create a space where your organization's investment makes a lasting impact.

Town of Pilot Butte Recreation Department
306-781-3402
recreation@pilotbutte.ca

Development & Housing Opportunities

PILOT BUTTE SUBDIVISION: CHARACTERISTICS AND CURRENT AVAILABLE LOTS

Subdivisions	Characteristics	District	Number of Vacant Lots
Butte Central	• Original Town site • Predominance of Detached Car Garages	R1	4
Discovery Ridge	• Predominantly three-car attached garage • Availability of a pond	R1 A (Single-Family)	40
Hillside Park	• Mix of Two-car attached and detached garages	R1	36
Plains	• Two-car attached garages	R1	35
Crescent Park	• Two-car attached garage	R1	Land Available
Willow Ridge	• Two-car attached garages	R1	8
Savanna	• Condos, Parking Lot	R3 (Multifamily)	Lots Available
Chateau Ridge	• Modular/RTM Town houses & Duplexes • One-car attached garages	RS1 (Special Group Homes)	Lots Available

2025 COST OF LIVING COMPARISON

Annual Property Tax Comparison

Towns	Tax Assessment	Municipal	School	Total
Pilot Butte	\$500,000	\$2,402.59 (@5.31 mil rate, incl base tax of \$200)	\$1,708.00	\$4,110.59
Balgonie	\$500,000	\$3,063.00 (@5.845 mil rate, incl base tax of \$725)	\$1,708.00	\$4,771.00
White City	\$500,000	\$2,753.20 (@3.658 mil rate, incl base tax of \$1,290)	\$1,708.00	\$4,461.20
Emerald Park	\$500,000	\$1,666.92 (@4.17 mil rate, no base tax, and sanitation levy of \$185.58)	\$1,708.00	\$3,560.50
Regina	\$500,000	\$4,241.26 (@4.16 mil rate, no base tax, and Library Levy of (\$349.75))	\$1,708.00	\$5,949.26

Information based on 2025 values & mill rates

Monthly Utility Rate Comparison

Towns	Water Rate	Sewer Rate	Total
Pilot Butte	\$52.00	\$40.00	\$92.00
Balgonie	\$68.43	\$46.05	\$130.48 (incl \$16.00 water/Sewer Levies)
White City	\$75.50	\$41.00	\$114.50 (incl \$28 Sewer Levies)
Emerald Park	\$72.58	\$48.22	\$138.05 (incl \$43.25 water/Sewer Levies)
Regina	\$67.06	\$86.92 (Incl. \$21.30 drainage & 15.90 waste charges)	153.98

Charges based on minimum of 14 Cubic Meters, and are based on 2025 information

WHY PILOT BUTTE IS ATTRACTIVE



: Fastest-growing municipality among the neighboring communities according to the 2021 Census.



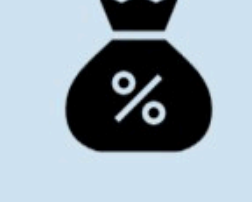
: More affordable housing options

: One of the lowest property tax rates among neighboring communities

: Early payment discounts on property taxes



: Shortest commute to East Regina with access to two major highways



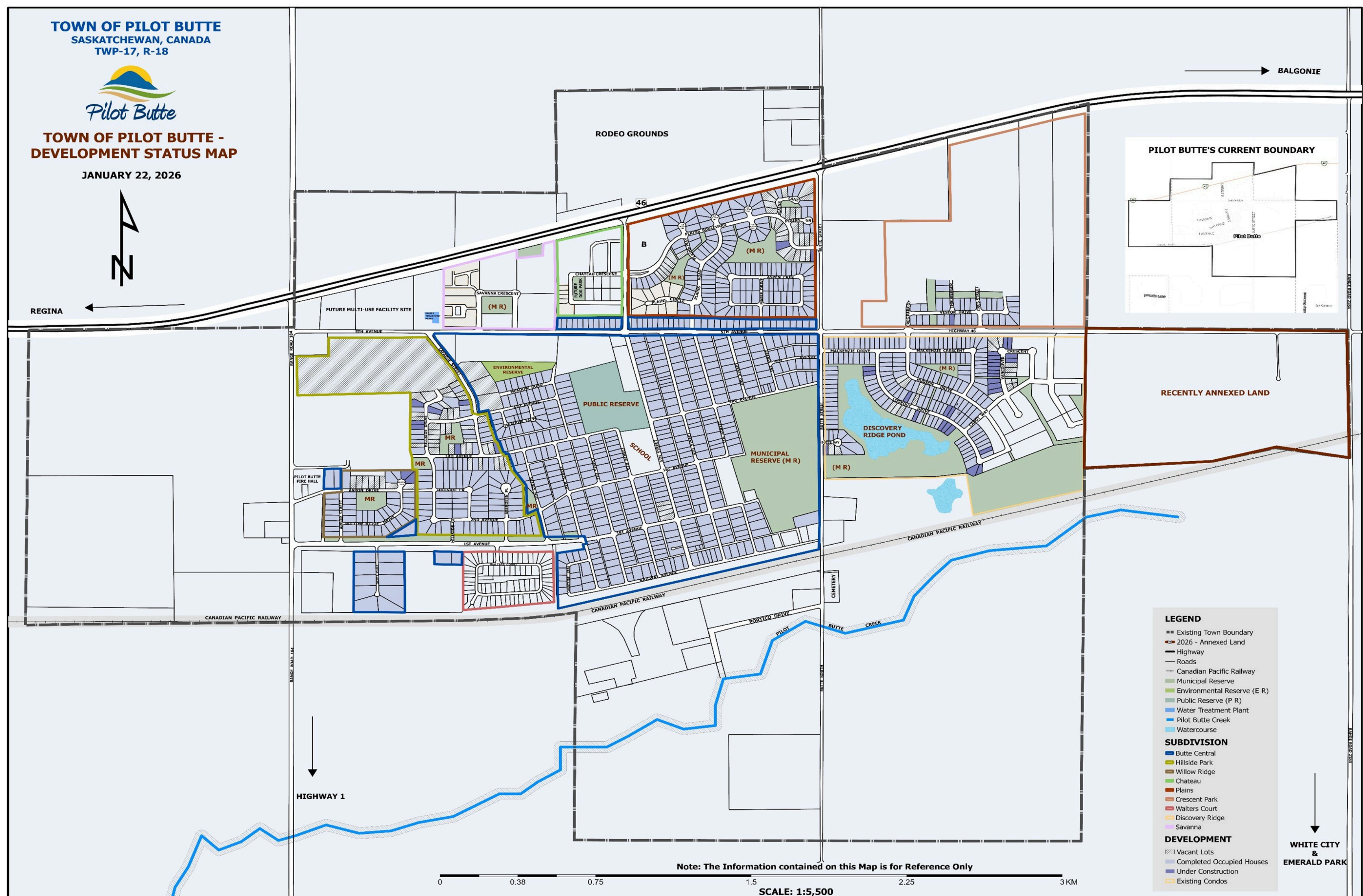
: Lowest utility rate among many neighboring towns



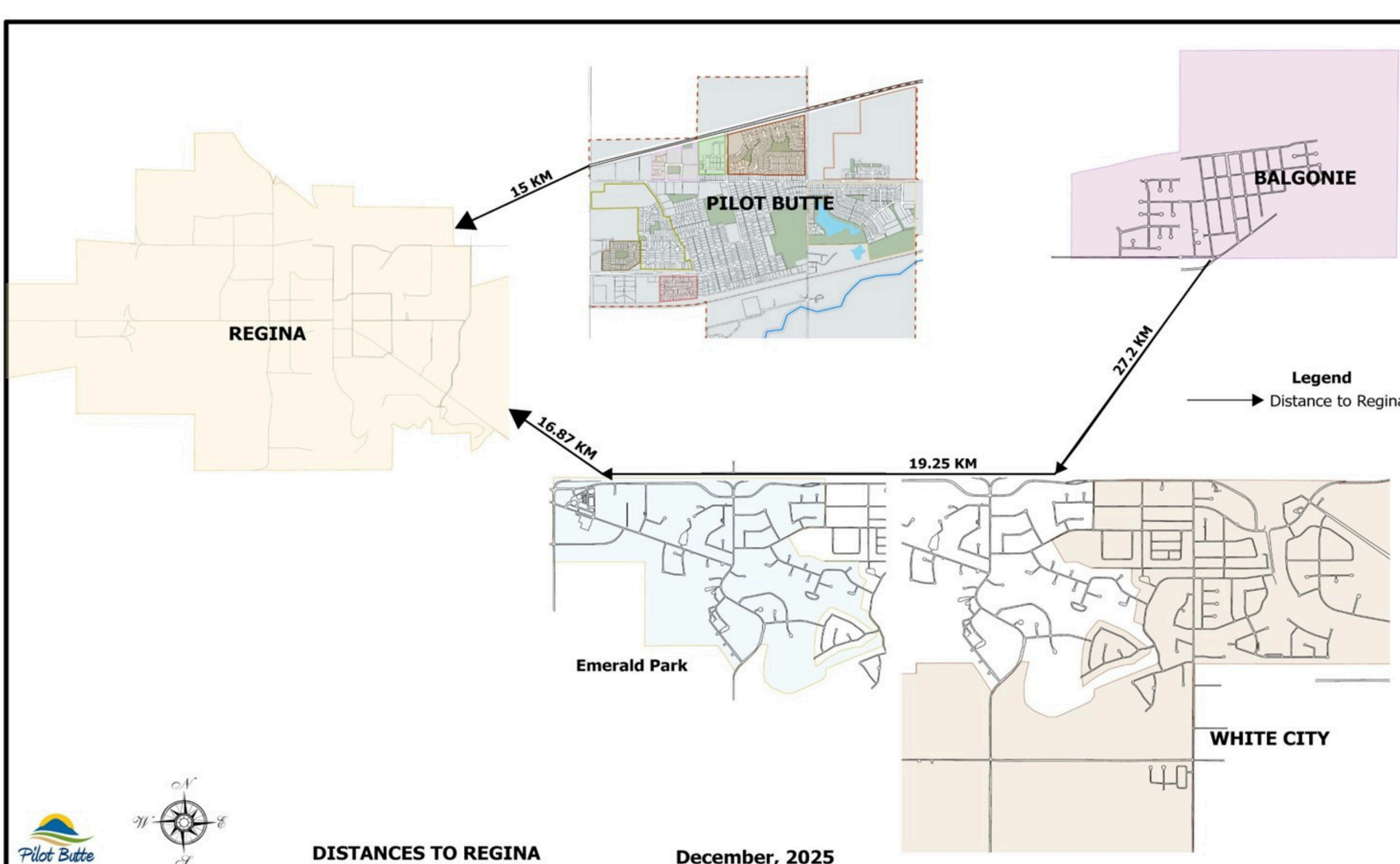
: Offering landscaping rebates for new residential homes



: Planning ensures well-served subdivisions/neighborhoods



DISTANCE TO REGINA



DEVELOPERS' CONTACT INFORMATION

