

Mayor's / Councillors' Message on Budget 2024

To my fellow Pilot Butte Residents:

As our 2020-2024 term ends, with a Municipal Election on November 13, we are grateful for the opportunity to serve and make a difference in this Community.

We faced many challenges this term, globally with Covid, high interest rates, supply chain issues, and high inflation. Council worked hard to keep the burden on taxpayers to a minimum.

Locally, Council increased the municipal early payment tax discounts when other communities lowered or discontinued their discount program. The Provincial and Federal Budgets have made cuts to municipal funding by shifting costs onto communities, forcing towns to raise the lost revenue at the local level. While the operational budgets in the past have been largely status quo, 2023 saw an increase in capital spending on Aberdeen Road and Butte South, upgrades to the water treatment plant membranes, safety upgrades at the Fire Hall and long-anticipated community upgrades at our recreation facilities and park renewal. Council is adding a \$156.00 per home base tax with no change to the mill rate. A base tax is a flat fee added to the municipal portion of each tax bill. The base tax reflects the philosophy that all properties benefit equally from some services (fire, infrastructure, roads, etc.) regardless of the assessed value of the property, and so all properties should contribute equally to these services. The base tax will go towards future capital infrastructure and a continuation of reinvesting into the Community.

Taxes play a crucial role in funding essential services and infrastructure that contribute to our quality of life and the prosperity of our community. Our goal is to ensure that our tax system remains fair and equitable for all members of our community. We continuously strive to find efficiencies in our budgeting process and explore innovative ways to maximize the impact of every taxpayer dollar. Implementing a base tax for capital infrastructure and other essential services is a critical component of funding mechanisms that enables our Town to build and maintain these for our future growth and economic prosperity.

Pilot Butte is proud to have the lowest taxes in the region while maintaining growth, investing in our future, creating communication platforms to let your voices be heard, continuing a legacy of transparency offering its residents a reason to "Grow here, Build here, and Live our lives here".

Mayor Peggy Chorney and Council



Grow Here

People are drawn to Pilot Butte for the quieter lifestyle it offers away from the hustle and bustle of the city life, but still with close proximity to a larger city centre. You'll find neighbours that have spent their entire lives here, and new young families just starting out and establishing new roots.



Build Here

Pilot Butte is a growing community, with new developments & houses bringing new neighbours & friends! You'll find spacious, affordable lots to build that perfect home, near walking paths, parks & picturesque scenery.



Live Here

There are many opportunities for all walks of life in Pilot Butte. Families will find programs, activities, sports & places to meet new friends, gather & play.

Live your lifetime here.

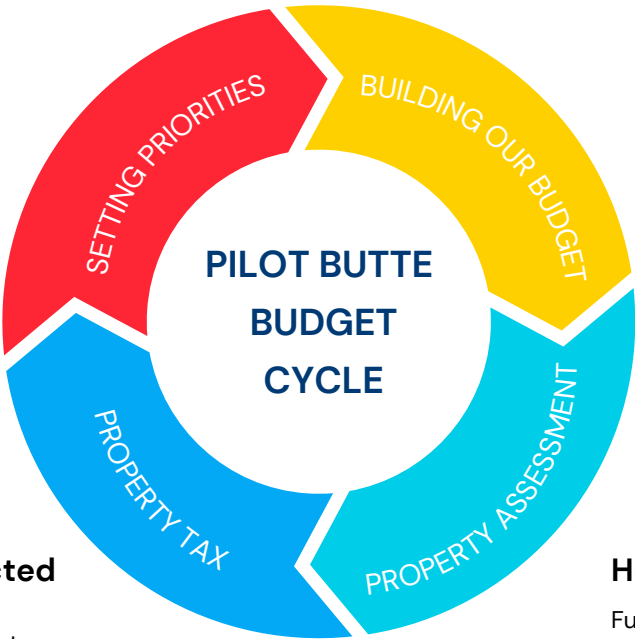
2024 Budget

What do we need

Annually, we assess our community's needs and goals through input from residents, businesses, and Town departments to prioritize projects and services.

How is your portion collected

After we've weighed priorities, determined the necessary funds, and assessed your property's value, your tax bill is calculated and delivered to you.



What is the cost

Council reviews and debates the proposed budget. They make adjustments as needed to ensure it meets the community's needs while maintaining financial stability.

How is your portion determined

Funding for services and programs comes from a combination of user fees and property taxes. The amount of property tax you are responsible for is partially determined by the assessed value of your property.

The 2024 Operating and Capital budget process has been a collaborative and comprehensive effort which involved the Management Team and the staff to carefully evaluate the Town of Pilot Butte's operating and capital budget requirements to deliver and maintain current municipal service levels.

Operating Budgets

Operating budgets are normally used to plan for your municipality's day-to-day spending, such as salaries, wages, benefits, heat, power, maintenance of buildings and infrastructure. As a financial plan, a budget usually includes projected operating expenditures and revenue sources for the period covered.

Capital Budgets

A capital budget typically covers existing infrastructure, such as core assets like roads, recreation centres and parks, as well as other types of assets to be maintained, or new infrastructure needs to be met in the future. It may set out the specific capital projects to be approved for the budgetary period, such as capital improvements, land acquisitions, new facilities/equipment, and identifies a source of financing for each.

Did you know?

The average residential property in Pilot Butte is valued at \$373,520. The Municipal portion of your property taxes in 2024 on a home of this value is estimated to be \$2,212.79.



BUDGET 2024 FOCUS AREAS

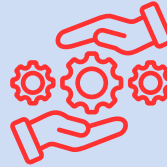
ADDRESSING

Roads and
Infrastructure



IMPROVING

Delivery of Programs
and Services



MAINTAINING

Focus on Economic
Growth



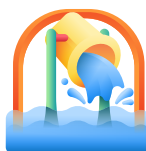
2024 BUDGET HIGHLIGHTS



Completion Official Community Plan and Zoning Bylaw



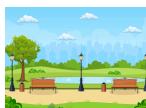
Water Treatment Plant Water Membrane Upgrades



Spray Park Completion



Roads and Infrastructure Improvements
Including: Butte Street South
Aberdeen Road



Park Renewal



Skate Plaza Completion

BUDGET IMPACTS



Inflation



Increase in Maintenance
Contracts



Decrease in
Development Fees



Increase in Labour
Contracts



Raising Fuel Charges



Increase in Capital
Projects

HOW DO WE COMPARE?

MUNICIPAL TAX COMPARISON				
	Assessed Value	Mill Rate	Base Tax	Total Municipal Taxes
BALGONIE	\$373,520.00	6.053	\$675.00	\$2,935.92
WHITE CITY	\$373,520.00	4.0968	\$1,190.00	\$2,720.24
PILOT BUTTE	\$373,520.00	5.5065	\$156.00	\$2,212.79

Also on the bill...

Note that municipal tax amounts may increase or decrease if your property's SAMA assessment changes. Also note that Town of Pilot Butte collects taxes on behalf of the school boards as part of your property tax bill.

Live your lifetime here.